

Use Dashboards in Alden ONE

There are a variety of Dashboards you can view and interact with in Alden ONE. To view the dashboards:

1. Within Alden ONE, click the **Saved Views** drop-down.
2. Scroll through the Views under **Quick Views** to find the dashboard you want to view, then click on it.

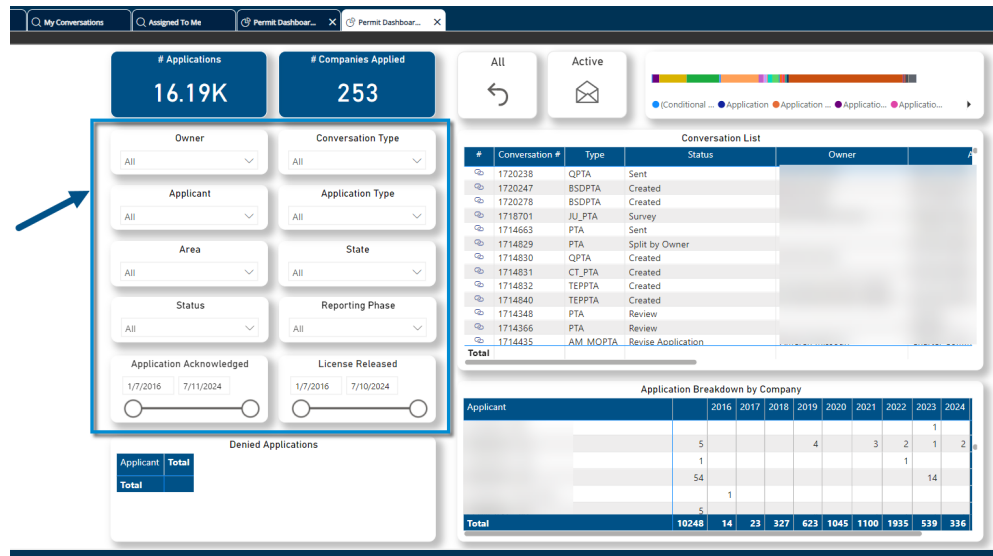
NOTE: Dashboards will be identified by having the Pie icon to the left of the Quick View title:



3. Depending on the Dashboard, you can set parameters, filter, or otherwise vary the data displayed.

EXAMPLES:

- a. You can use the parameters on the left of the **Permit Dashboard – Data Lake** dashboard.



- b. When you see the arrow in table headers, you can click the arrow to sort the data in the table to be either ascending



or descending by that column.

#	Number	Status	Assigned To	Feeder Name	QuadrantID	FPLID	PHID
	856942	Complete					
	856941	Complete					
	856940	Complete					
	856939	Initial					
	856938	Complete					
	856937	Complete					
	856936	Complete					
	856935	Complete					
	856934	Complete					
	856933	Engineering Issue					

c. Wherever you see blue underlined text or a chain-link icon, you can click it to be taken to the **Conversation**:

Details

App#	Type
1000917	DAS
1000921	DAS
1001742	DAS
1002028	DAS

#	Number	Status	Assigned To	Feeder Name	QuadrantID	FPLID	PHID
	856942	Complete		OKEECHOBEE_401632	DJ0547	380421456	804
	856941	Complete		OKEECHOBEE_401632	DJ0547	380421454	801
	856940	Complete		OKEECHOBEE_401632	DA0547	324861370	82
	856939	Initial		OKEECHOBEE_401632		-99969	274
	856938	Complete		OKEECHOBEE_401632	DA0547	277583038	284
	856937	Complete		OKEECHOBEE_401632	DJ0547	325266691	814
	856936	Complete		OKEECHOBEE_401632	DJ0547	273492203	908
	856935	Complete		OKEECHOBEE_401632	DD0550	282094547	549
	856934	Complete		OKEECHOBEE_401632	DJ0547	269559319	944
	856933	Engineering Issue		OKEECHOBEE_401632		-99921	942

d. You can click buttons like the **All** or **Active** buttons in the **All Conversations Dashboard – Data Lake** dashboard to



show all or active Conversations.

The screenshot displays the aldenONE web application interface. At the top, there is a navigation bar with the aldenONE logo, a search bar, and a menu. Below the navigation bar, there are several tabs: "Poles on Map", "My Conversations", "Assigned To Me", and "All Conversations...". The main content area is divided into several sections:

- Filters:** Includes "All" and "Active" buttons, a "Create Date" range selector (4/21/2008 to 7/9/2024), a "Last Modified Date" range selector (4/29/2015 to 7/9/2024), and a "Primary Company" dropdown menu.
- Summary Metrics:** Displays counts for "Due in Next 30 Days" (2,737), "Due in 30 Days" (303), "Overdue" (46,391), "No Due Date" (293,377), "Complete" (208,746), and "Count" (342,808).
- Conversation Types:** A bar chart showing counts for various types: CTI Pole Connection (71,024), STATIC TPA Field Inspection (54,415), Cell Site Inventory (47,621), Vault Audit (22,187), Resistograph Inspection (19,244), STATIC TPA Construction (15,055), Pole Connection (14,287), and Pole Audit (11,992).
- Conversation Current Status:** A bar chart showing counts for various statuses: Complete (116,441), At Closed (45,275), Initial (31,921), Cancel (24,394), Created (16,126), Overdue (14,049), Assign Poles Overdue (12,797), and Unpaid (6,989).
- Conversation By State:** A map of the United States showing conversation counts by state.
- Conversation By Pole Count:** A map of North America showing conversation counts by pole count.
- Table:** A table listing individual conversations with columns for Conversation #, Type, Create Date, Last Modified, and Title. The table contains 17 rows of data.

We strongly encourage you to set parameters in your various dashboards and use them to help you get an *at a glance view* of key metrics for your business.